



Duke Road, London, W4 2DH

Guide Price £650,000

**WHITMAN & CO.**

SALES · LETTINGS · COMMERCIAL

- Fully wheelchair accessible
- Sought after location
- Fantastic transport links
- South facing garden
- Freehold property
- No chain

Tenure - Freehold  
Local Authority - Hounslow  
Council Tax - Band E

## THE PROPERTY

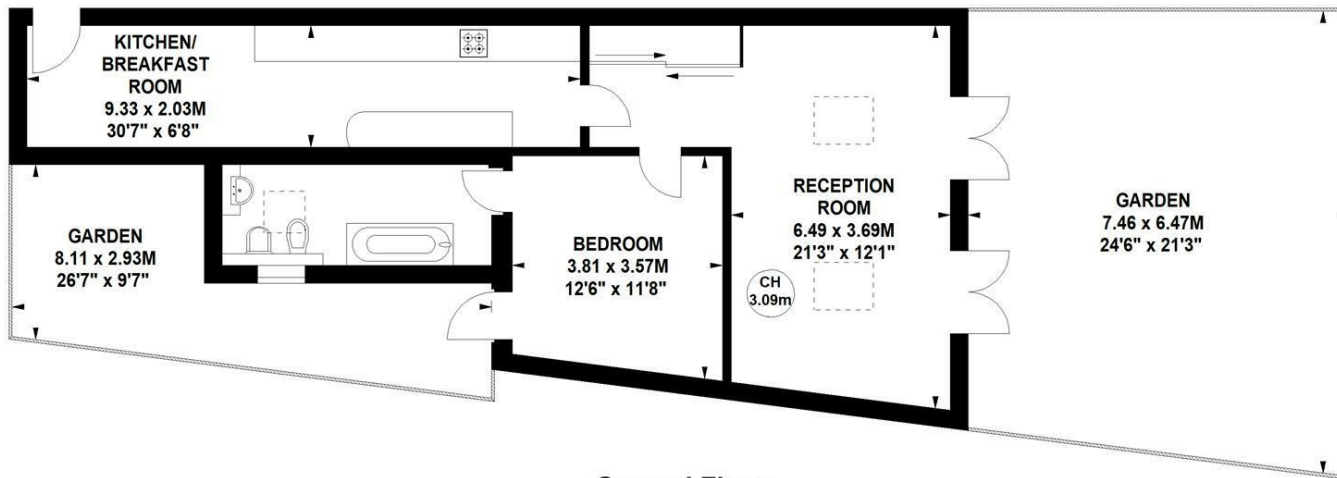
A unique freehold property, designed with full wheelchair access, is ideally located in the popular Glebe Estate, offering close proximity to numerous amenities and the added benefit of a private south-facing garden. The property features a 21' reception room with French windows opening onto a 24' landscaped garden, a 30' fully integrated kitchen/breakfast room, a double bedroom with access to a courtyard garden, and a spacious bathroom. Close proximity to the extensive shopping, bar, and restaurant facilities on Chiswick High Road, Turnham Green Tube Station, and Chiswick House and Grounds. No chain.

## Devonshire Passage, W4

Approximate gross internal area

71.16 sq m / 766 sq ft

Key :  
CH - Ceiling Height



Ground Floor

Not to scale, for guidance only and must not be relied upon as a statement of fact.  
All measurements and areas are approximate only

## SITUATION



5-7 Turnham Green Terrace, Chiswick, London, W4 1RG

Tel 020 8747 8800

E-mail [sales@whitmanandco.com](mailto:sales@whitmanandco.com)

Website [www.whitmanandco.com](http://www.whitmanandco.com)